



We Serve Design
Fabrication & Erection

- INDUSTRIAL
- COMMERCIAL
- AGRO BASED STRUCTURE
- RESIDENTIAL & OTHERS



MARN STEEL STRUCTURE LIMITED

World class steel structure solution

Pre-Engineered Steel Building Manufacturer

ABOUT US...

MARN STEEL STRUCTURE LTD. is a prominent pre-fabricated steel building manufacturer in Bangladesh with a group of experienced and self recognized professionals.

We are delighted to introduce ourselves as one of the organization doing complete solution of design, detail, Fabrication, supply and erection of modern Pre-Engineered total Building Systems.

We serve in the following field of Industrial, Residential and Commercial structure: Spinning Mills, Composite Mills, Warehouse, Garments Factory, Shoe Factory, Textile Mills, Workshop, Knit-Dyeing, Chemicals, Auto Rice Mills, Auto Bricks, Poultry, Feed Mills, Foods and Beverage, Furniture's, Slaughter House, Car Parking Sheds, Air-Craft Hangers, Hospitals, Residential Buildings, Exclusive Duplex Villa, Educational Institute, Show Rooms, Super Market, Petrol Pump, Commercial and Office Building.

MARN offers one stop solution in steel structure and civil construction. The strength of MSSL is its ability to deliver and serve the clients with understanding their real and delight needs and managing a high quality in steel structure and civil construction within time and budget. The most important resource of **MARN STEEL STRUCTURE LTD.** is its people, their experience along with effective management skills.



COMPANY INFORMATION

INCORPORATION	: Reg. No: C-111383/13
CORPORATE OFFICE	: House # 09 (2 nd Floor), Garib-E-Newaz Avenue Sector # 11, Uttara , Dhaka-1230, Bangladesh.
BANANI OFFICE	: House # 48 (Flat A-3), Road # 11, Block-C, Banani C/A Dhaka- 1213, Bangladesh.
Registered Office	: Room no # 4/C (3rd) Floor, Plot # 56, A H Tower, Sector # 3 Uttara, Dhaka, Bangladesh.
CONTACT	: +88-02-48958774 +88-019 14 24 24 00 ~ 42 +88-01713 22 96 94
E-MAIL	: info@marnsteel.com md@marnsteel.com marnsteel@gmail.com
WEB	: www.marnsteel.com
FACEBOOK	: https://www.facebook.com/marnsteel/
Linkedin	: https://www.linkedin.com/company/marn-steel-structure-ltd/
Viber,Imo, Whatsapp	: 01713 229694, 01914242400
FACTORY	: Puran Kalia, Turag, Dhaka. +88-01914242402, 04, 16 factory@marnsteel.com factory.marnsteel@gmail.com
PRODUCTION CAPACITY	: 18000 MT (Yearly)
MANPOWER	: 500 Persons
BANKERS	: Sonali Bank Limited Premier Bank Limited Exim Bank Of Bangladesh Limited (EXIM)
FIELD OF ACTIVITY	: Design, Detailing, Fabrication & Erection of Pre-Engineered Steel Building, RCC Construction and Road Construction.

FROM THE DESK OF MANAGING DIRECTOR

It is our great pleasure to inform you that MARN STEEL STRUCTURE LTD. has grown as a prominent and remarkable steel structure manufacturer and construction company in Bangladesh. It has an ardent promise to deliver a high standard of products & services for its valued customers with the best business norms and ethics. We have our own architectural and engineering design team who are competent enough to make flexible and readily adjustable design as per the demand and desire of our customers. Our technical team comprises of highly qualified Architects, Engineers and Skilled Technicians who have comprehensive experience and expertise in Design, Fabrication, Erection and Construction of any steel and R.C.C works. We are committed to provide world-class quality services as well as the best quality steel-structure materials. We assure that our services will be attractive, durable and energy-efficient. In our design and specification, we always follow international best practices and BNBC. We also use updated design software's in our Structural analysis. It is our aspiration and belief that all of our customers, well-wishers, stakeholders, bankers and our employees will maintain a friendly relationship with each other and it will improve day by day by our reliability, professionalism and mutual understanding.

We would like to appreciate your interest in MSSSL. Once again, we would convey our heartfelt gratitude and gratefulness to all concerned.



Engr. Md. Abdur Rahim
Managing Director
MARN STEEL STRUCTURE LTD.

TOP MANAGEMENT



Md. Monoar Hossain Pathan
Chairman



Engr. Md. Abdur Rahim
Managing Director



Mst Najmun Naher
Chairman (EC)



Engr. Md. Washim Akram
Director



Engr. Younus Ali
Sr. GM (Operation & Business Development)



Engr. Md. Mohshin Sarker
GM (Construction)



Engr. Md. Hanif Uddin
Chief Structural Engineer (RCC)



Engr. SK Kamruzzaman
Manager of Structural Design (Steel)



Nitai Chandra Bhowmik
AGM of Finance & Accounts



Engr. Md. Sahadot Hossain
Factory Manager

VISION

- ⦿ MARN STEEL STRUCTURE LTD. have to be the most reliable and innovative manufacturer, service and solution provider in the steel structure industry in our country and abroad.
- ⦿ To develop and improve young engineers to make them expert and efficient in Pre-Engineered Steel Building Sector.
- ⦿ To offer all technical support to its customers for getting maximum satisfaction.
- ⦿ To make and establish environmentally friendly product.
- ⦿ To make brand loyalty product by keeping and holding customers in the true and natural heart.
- ⦿ To ensure employment facilities for our society that can directly and indirectly contribute our total economy in our country.

MISSION

We ensure best Quality product and services, reasonable price and in time delivery to our Customers by giving them best satisfaction and fill up in commitment with mutual benefit of our business having been emphasized our images, attitudes and perceptions while utilizing innovative technologies within an environment of motivated employees focused on continuous improvement, highest business standards, work ethics and corporate citizenship, leading to added value to our customers.

WHY YOU WILL MAKE STEEL STRUCTURE?

- ⦿ Shortest Construction Period.
- ⦿ Protection from Earthquake and wind flow.
- ⦿ Cost effective.
- ⦿ Large span for smooth factory arrangement.
- ⦿ Transferable.
- ⦿ Easily expanded to any length.
- ⦿ Manufactured exclusively.
- ⦿ High re-sellable perfecting for virtually any commercial, Industrial or consumer application.

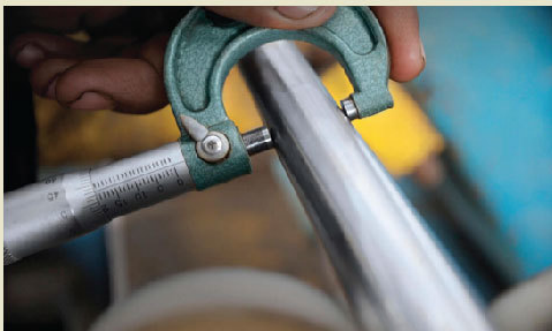
WHY YOU WILL COME IN MARN STEEL?

- ⦿ Own Factory.
- ⦿ Secure and Cost-effective design.
- ⦿ Experienced technical personnel.
- ⦿ Proper planning & Friendly Technical Suggestion.
- ⦿ Firm Commitment.
- ⦿ High quality workmanship and all time work monitoring.
- ⦿ Ensure best quality imported materials.
- ⦿ Available pre-fabricated steel buildings accessories
- ⦿ We are bonded and fully insured for the customer's protection.
- ⦿ We offer one-year warranty on our workmanship at no cost to the customers.

QUALITY

MARN Steel Structure Ltd. all the time emphasizes total Quality management. Its main motto is quality. The Quality Manual details the quality policy, quality system procedures and duties & responsibilities of the key personnel.

MSSL has installed an in-house Quality Assurance (QA) program implementing by the QA Manager through his department and supported by the company management at related personnel.



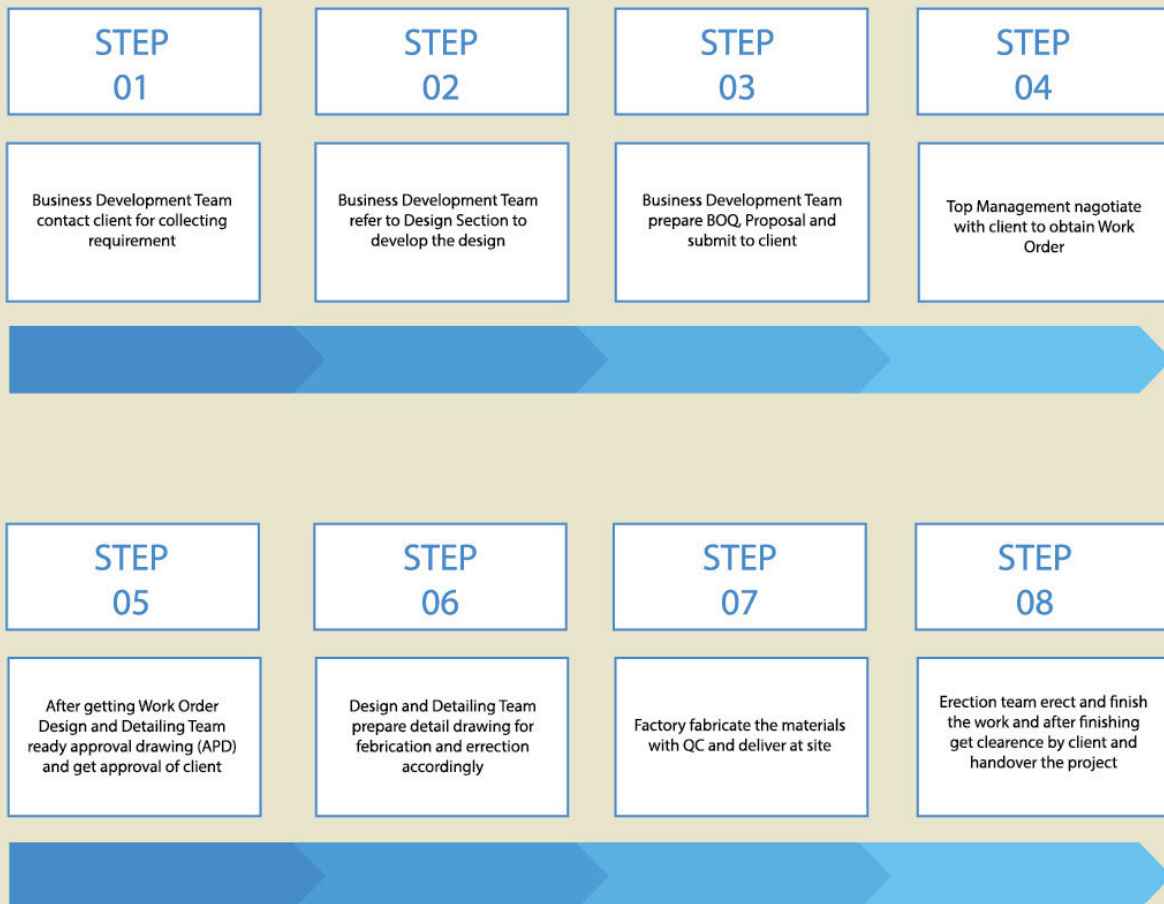
OUR SERVICES

We are high-lighted ourselves because of we already have proved as a best service provider to our customers. All the time we think customer is the king. In the future it will increase dramatically. We heartily think after sells service is very important. The core services are:

- ◎ Precise design with Engineering Flexibility
- ◎ Cost Effective Solution
- ◎ Accurate Fabrication
- ◎ Installation with Expertise
- ◎ Attractive and Versatile Roofing & Cladding Systems
- ◎ Using modern Fabricating Machines
- ◎ Competitive Price, Fastest delivery & Services
- ◎ Uncompromised Quality



ACTION PLAN FLOW CHART





BUSINESS DEVELOPMENT TEAM

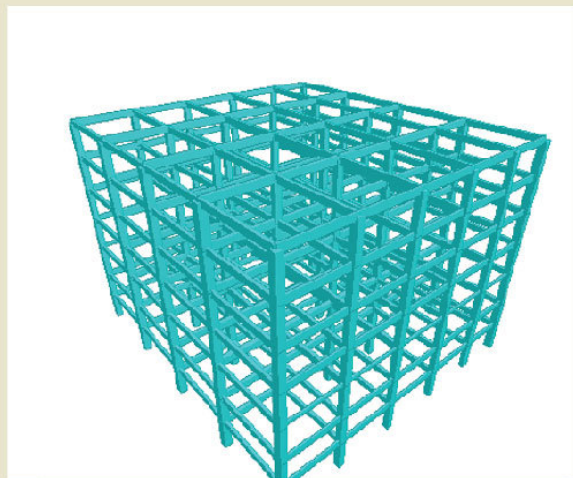
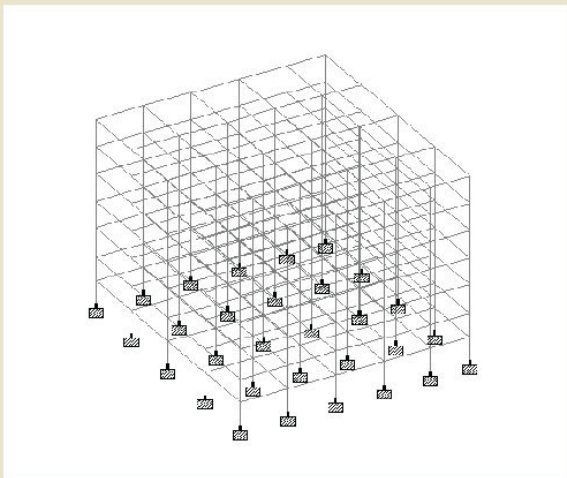
We have a group of skilled, efficient, punctual and creative Business Development Team with sufficient engineering knowledge and expertise on modern building solution of steel structure. Our team, generates effective, efficient and innovative ideas for our honorable customers. We have dedicated mentality and our Business Development Team works in a team as such a way that they can meet customers need completely in an optimum way. We provide services to our clients in the straight- way by appropriate design of product & services with best reputation since long time. The Business Development Team looks after the following various marketing activities, ensuring to accomplish the company's vision & mission strategies:

- ⦿ Effective planning
- ⦿ Brand development
- ⦿ Feasibility studies
- ⦿ Market research
- ⦿ Latest market trends & technology for its products competitor
- ⦿ market studies
- ⦿ Exploring new market
- ⦿ Planning and implementing a marketing strategy developing
- ⦿ creative advertisement campaign and promotional literatures
- ⦿ Arranging campaign through various appropriate media
- ⦿ Public relations activities
- ⦿ Participating exhibitions
- ⦿ Seminars, Symposium, Conference



DESIGN TEAM

We have a remarkable Structural Design Team having been skilled, experienced and competently qualified professionals with excellent track record of handling monotonous situations of difficult buildings system to accommodate architectural features. We have strong experienced judgment & good spontaneous feeling to designs structures that are capable of withstand to incremental weather conditions and seismic situations as per latest code of practices. We work closely with each client from concept of reality; design to construction and to owner.



DESIGN CODE

The buildings are designed in accordance with the following codes:

A. Loads are Applied in accordance with:

- ◉ BNBC-2006 (Bangladesh National Building Codes)
- ◉ MBMA-2005 (Metal Building Manufacturers Association)
- ◉ IBC-2006 (International Building Code)
- ◉ ASCE-7-05 (American society of Civil Engineers)

B. Hot rolled and built-up Sections are designed in accordance with:

- ◉ American Institute of Steel Construction (AISC)
 - * Steel Construction Manual
 - * Design Guide
 - * ASD and LRFD Method

C. Cold-formed members are designed in accordance with:

- ◉ AISI- (American Iron and Steel Institute)

D. Welding is applied in accordance with:

- ◉ AWS- (American welding society.)

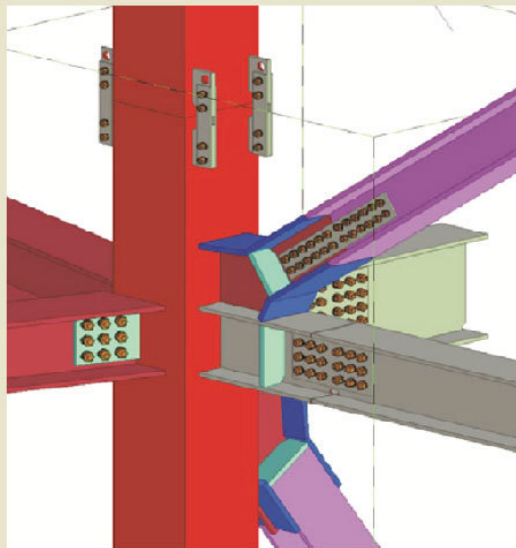
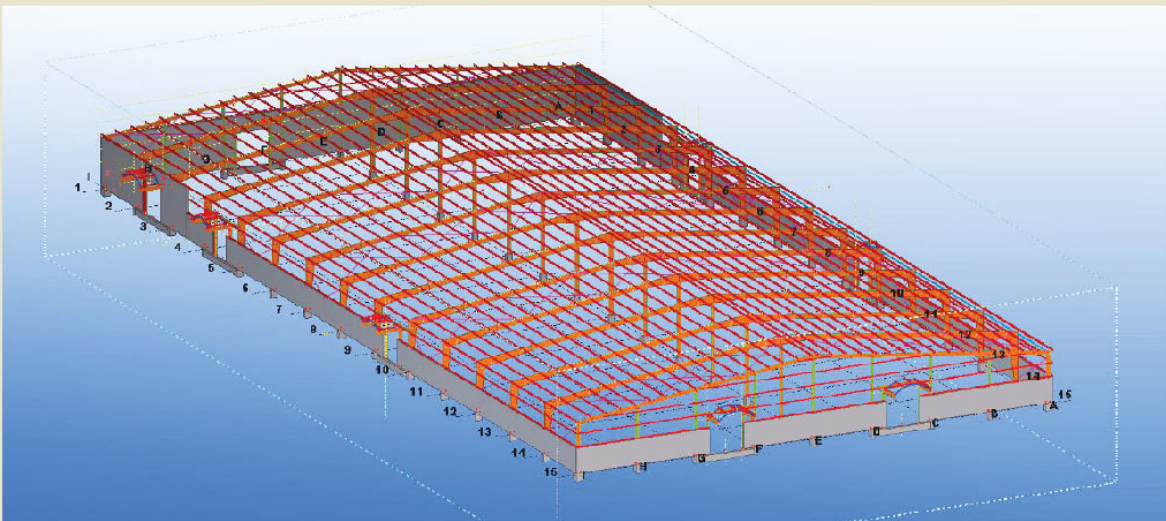
E. Structural Analysis, design and detailing is done by the aid of following softwares :

- ◉ STAAD Pro.
- ◉ ETABS
- ◉ SAP
- ◉ 3D Studio Max
- ◉ Autodesk Revit
- ◉ SketchUp
- ◉ CorelDraw
- ◉ TEKLA Structures
- ◉ Auto Cad
- ◉ Micro Station



DETAILING TEAM

MSSL has an experienced team of Detailing Engineers and checkers that use advance AutoCAD/Tekla Structure for drafting, modeling, designing and drawing Steel structures in compliance with AISC and other relevant building codes, according to specifications and client's requirements. Each steel component is virtually detailed to facilitate proper fabrication. Parametric models create a clear visual demonstration of all building components. This intelligent and precise engineering ensures the highest level of build quality and provides an accurate design & detailing process.



QUALITY CONTROL TEAM

All structures of MSSL are designed and manufactured strictly according to international standard specifications ensuring maximum safety and economy by making optimum use of quality raw materials and sheets. MSSL check the raw materials to verify the standard of material supplied as well as to ascertain the quality of manufactured steel structures at various stages. The lab is equipped with all necessary equipments.

- ◎ All dimensional & weight checking is carried out at factory.
- ◎ All raw materials required for the product are as per International standard specification.
- ◎ Quality Manual is maintained as per requirement of ISO.
- ◎ All welders are tested, trained and certified.
- ◎ Field tests, like: Dye Penetrate Test, Ultrasonic test etc. are done to ensure highest quality of welding.



ERECTION TEAM

MARN Steel Structure Ltd. has a strong team of engineers who are responsible for erection of pre-fabricated steel structures to its valued clients. It also has a large fleet of experienced and trained foreman and erection workers who are able to face challenges of all kinds of installation difficulties and come out with success and precise quality. To eliminate time and efforts in solving disputes and claims raised by erectors due to delivery issues and mismatches, if any.



CIVIL DEPARTMENT

◎ Architectural Design

We do conceptual drawing, design, master plan, 3D drawing, RAJUK/ Municipal drawing and aesthetic beauty of the project as per clients requirement with our knowledge, experience and expertise. We maintain all standard codes in BNBC to respond to the project program needs.

◎ Structural Design

MARN STEEL STRUCTURE LTD. do safe, economic, easy and quick construction design as per BNBC.

◎ Quantity Surveying

We do planning of our project, by MS project and monitor costs to complete the project with minimum time.

◎ Project Planning and Progress Monitoring

We do accurate and quick estimate, rate analysis, BOQ, costing and budgeting using our self-made oracle database software.

◎ Cost Controlling and Monitoring

We manage cash and material flow using MS project and monitor costs by our software.

◎ Quality Monitoring

We test concrete strength, brick, sand, stone chips, and MS rod from BUET and we also conduct pile integrity test to maintain the quality of construction.

RCC CONSTRUCTION & ROAD CONSTRUCTION

We do layout with total station, Piling (cast in situ/precast), all kinds of foundation and all civil works of single and multistoried PEB with our experienced Engineers. We also construct multi-storied RCC building with basement, internal road, Machine foundation, Harmonize Floor with mechanically powered trowel finish, Land filling, Boundary wall, Sanitary, Electrical and Sewerage works, all internal finishing works, like Mosaic, Tiles, Marble, Wooden door, Aluminium door, Window, False ceiling, Glass door etc. We also construct Govt. organization like as LGED, Education Engineering Department, City Corporation, Roads & Highway, PWD, NAVY, CAAB & BEPZA project.



FACTORY

MARN STEEL STRUCTURE LTD. having been well equipped with modern machinery along with expert engineer and workers actualizes the detailing the fabrication drawing for each member. It has a number of section, like: Cutting, Fitting, Fabrication, Welding, Grinding and Painting.

FACTORY MACHINERIES



Shear Cutting Machine



Auto Cutting Machine



Submerge Arc Welding (SAW) Machine



H-Beam Assembling with SAW



Magnetic Drill Machine



Radial Drill Machine

FACTORY MACHINERIES



Profile Sheet (Roof & Wall) Forming Machine



Decking Panel Forming Machine



C & Z Purlin Forming Machine.



Iron Work/ Punch Machine



Washer Making Machine



Anchor Bolt Machine

◀ ANCHOR BOLT MAKING SECTION ▶



◀ CUTTING SECTION (SHEAR CUTTING) ▶



◀ CUTTING SECTION (AUTO CUTTING) ▶



◀ **FITTING SECTION** ▶



◀ **SUBMERGE ARC WELDING SECTION** ▶



◀ **FABRICATION SECTION** ▶



◀ DRILLING & PUNCHING SECTION ▶



◀ MIG WELDING SECTION ▶



◀ SURFACE PREPARATION SECTION ▶



PAINTING SECTION



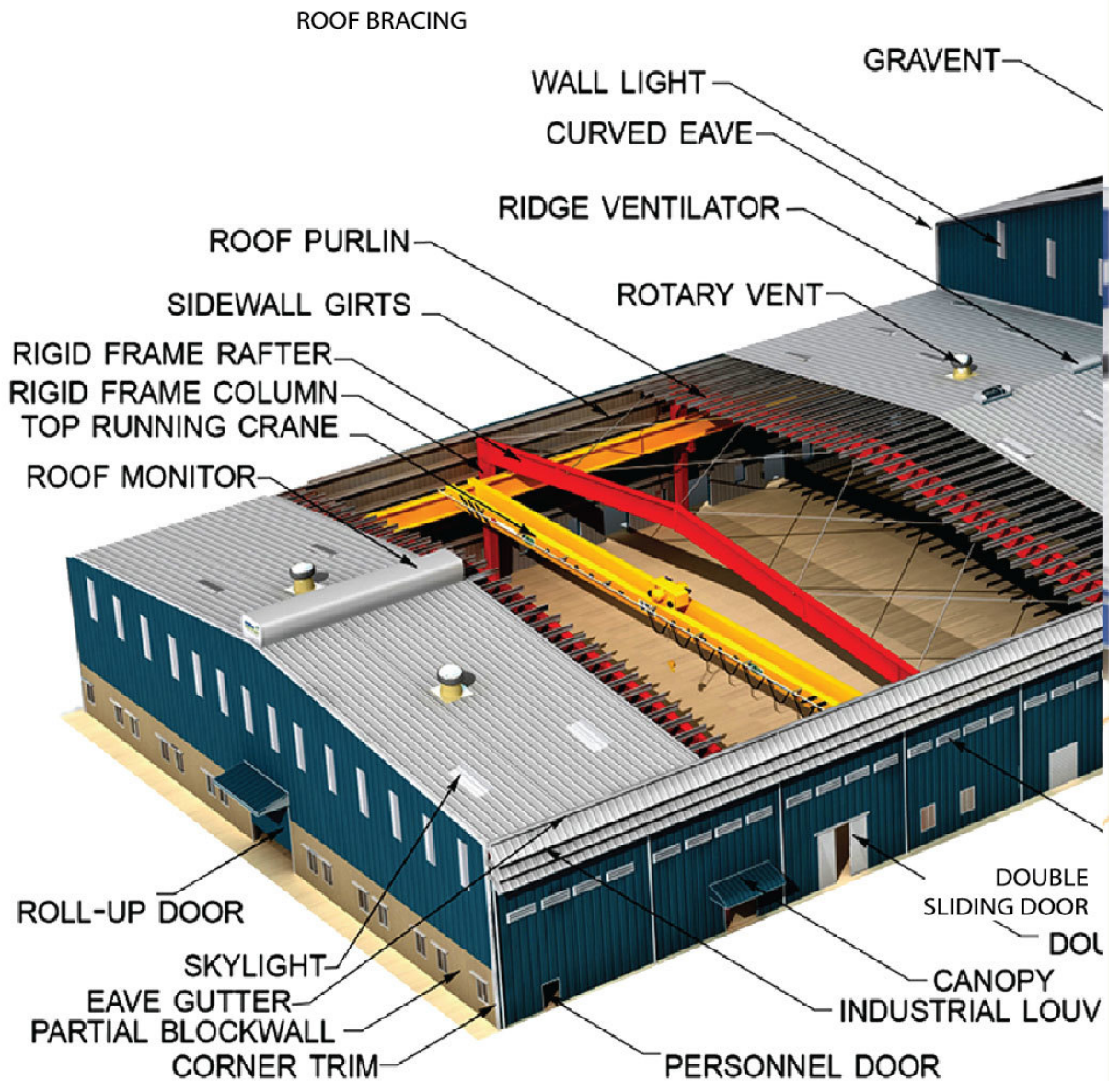
FACTORY PREMISES & STAFFS

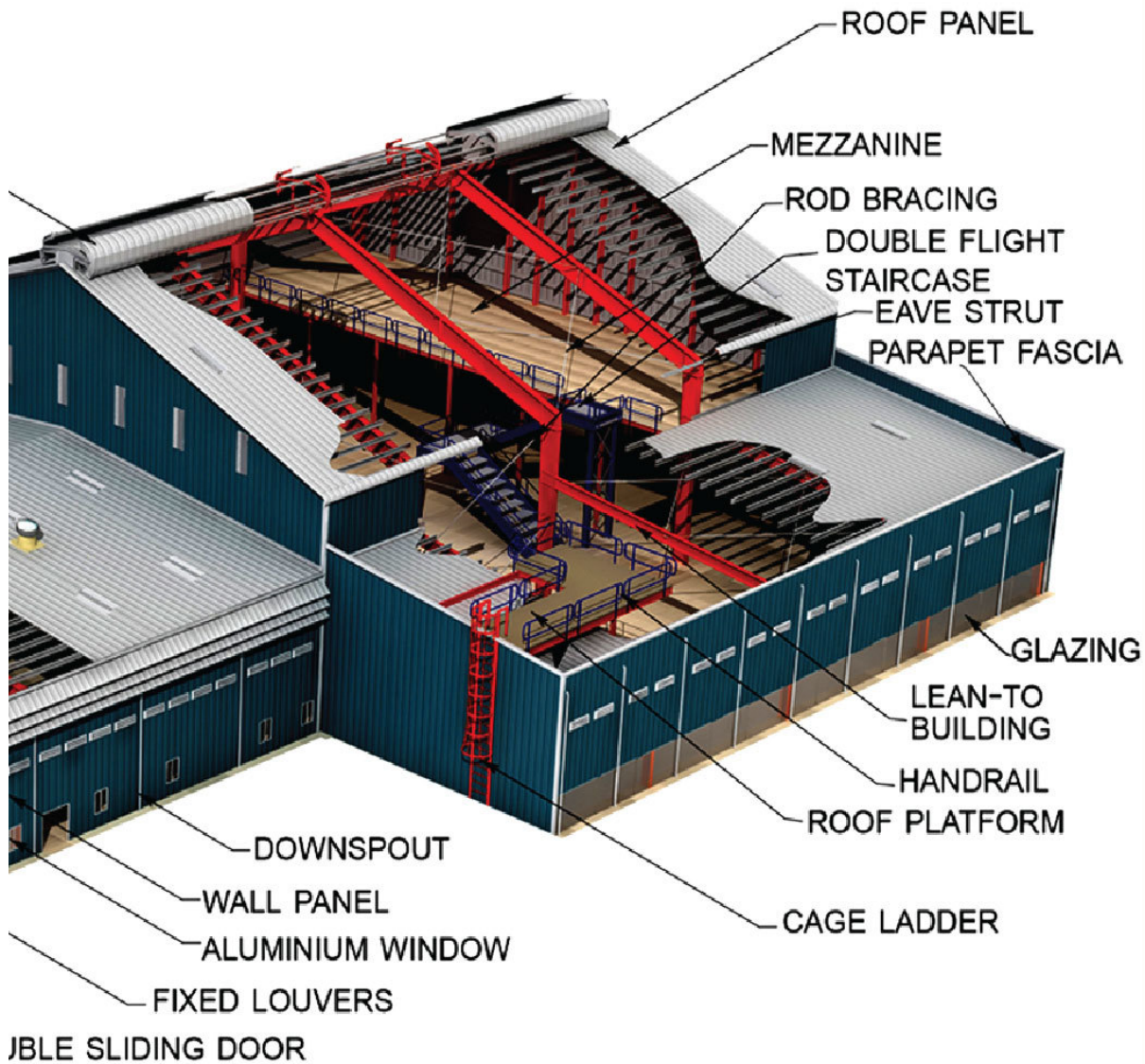


SAFETY & SECURITY



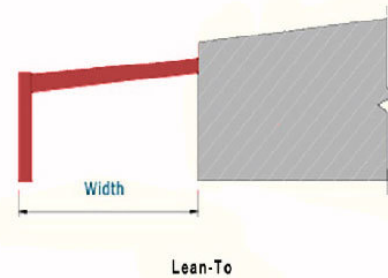
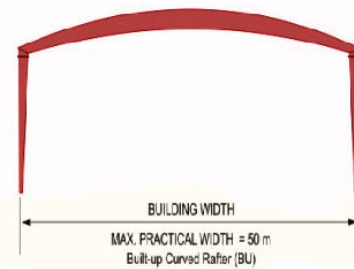
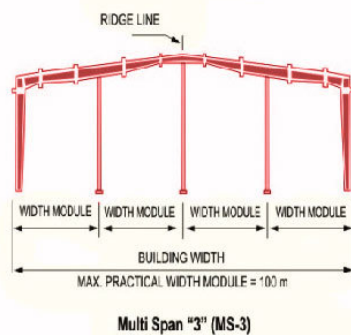
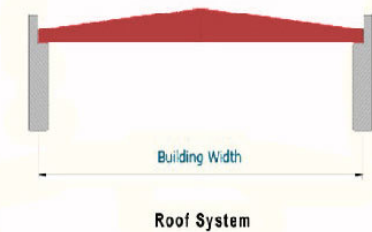
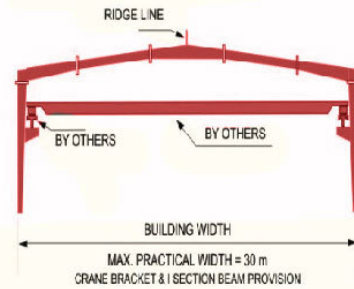
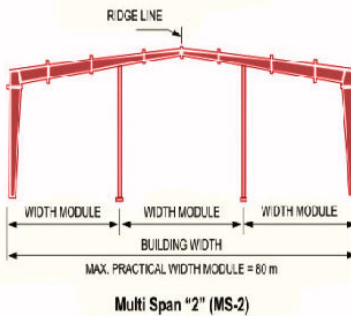
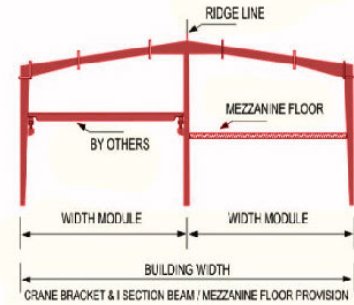
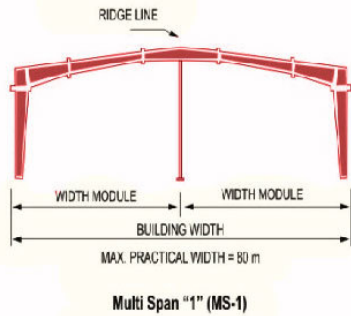
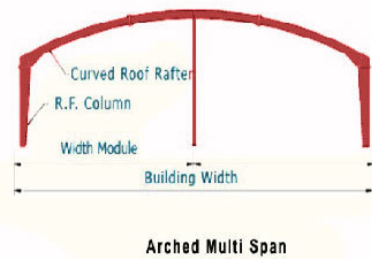
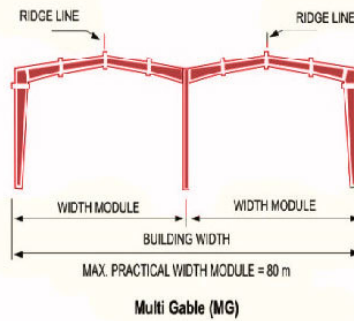
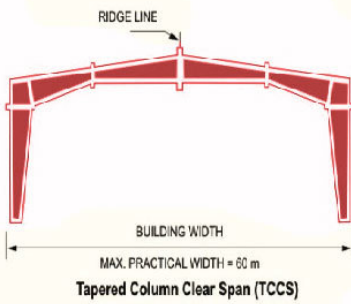
ISOMETRIC VIEW & DETAIL'S STEEL SHED BUILDING



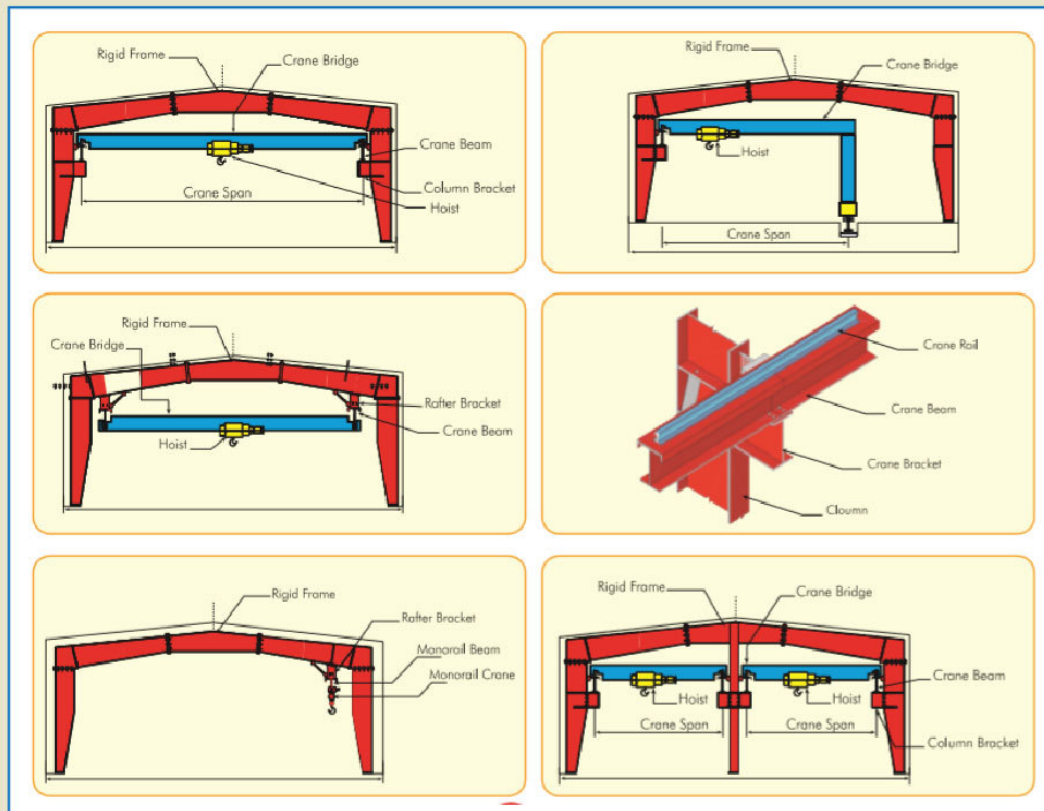


ERS

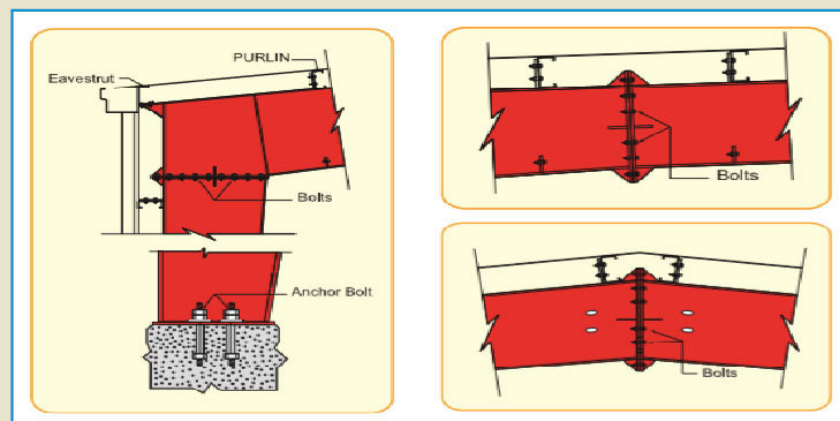
FRAMING SYSTEMS



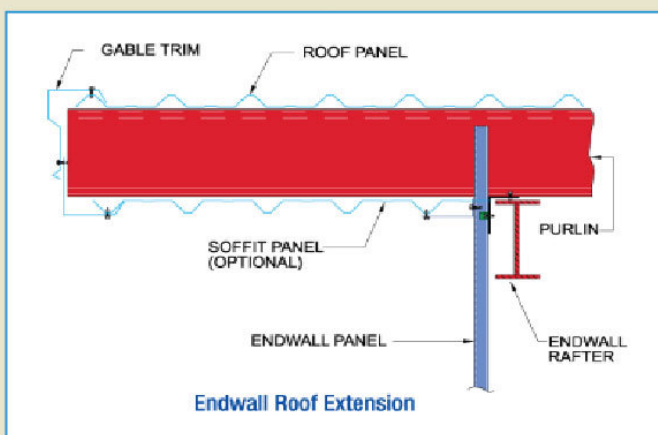
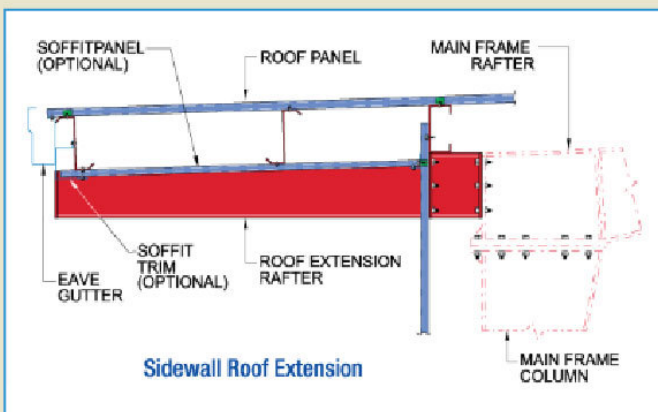
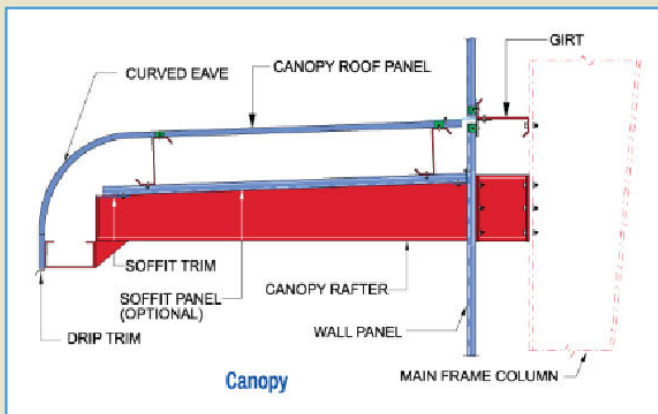
CRANE SYSTEMS



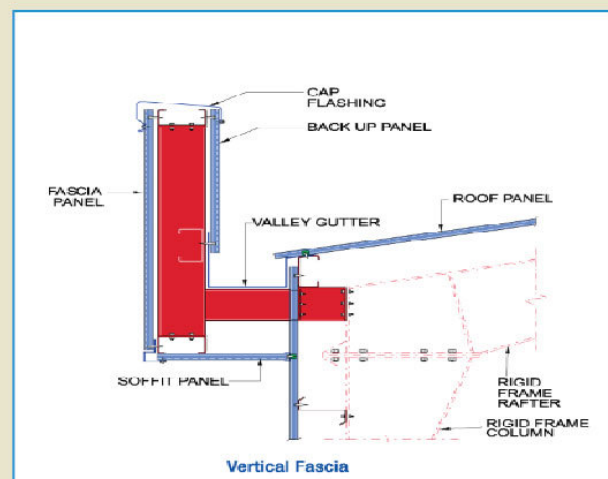
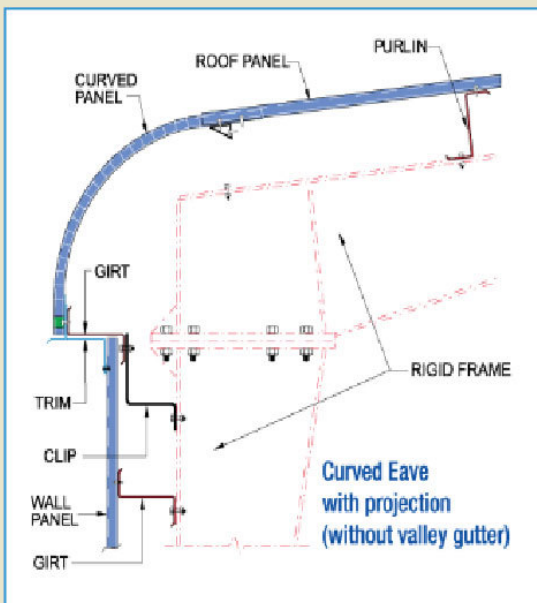
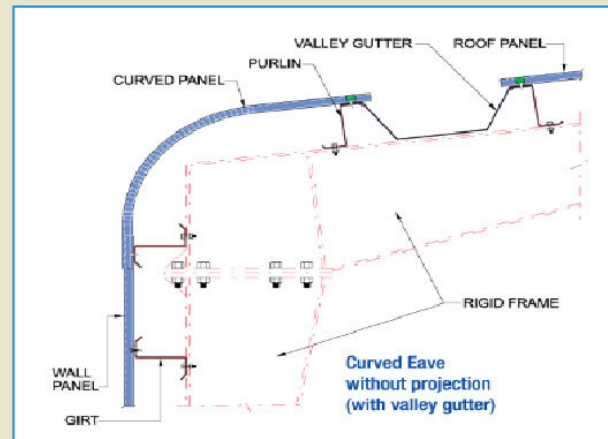
CONNECTION DETAILS



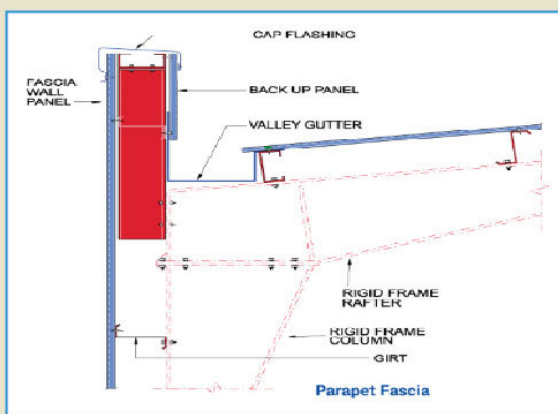
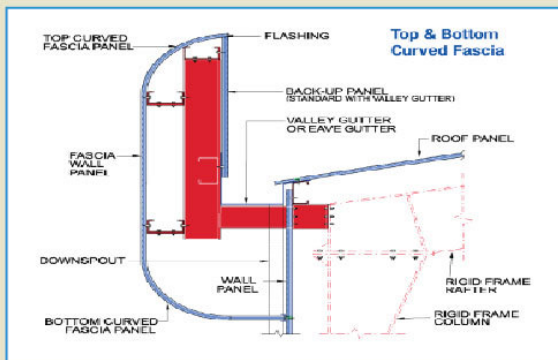
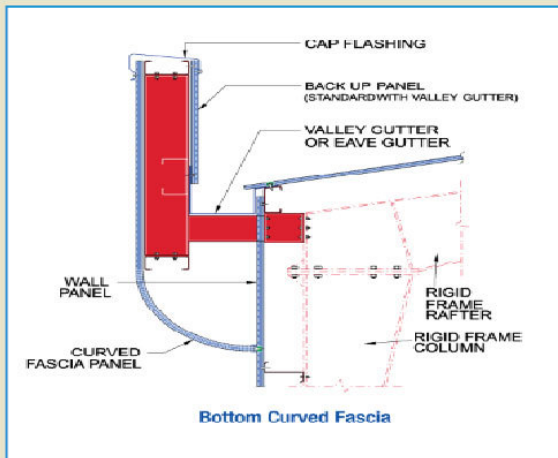
STRUCTURAL SUB-SYSTEMS



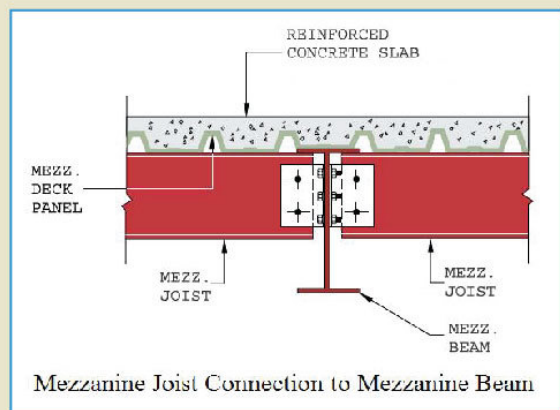
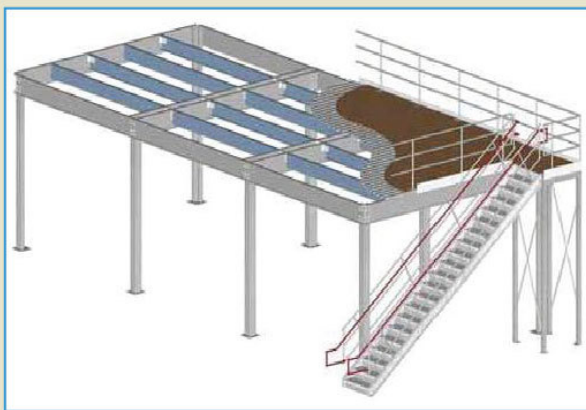
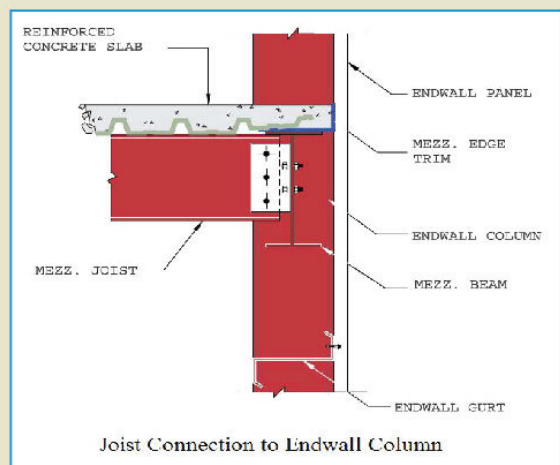
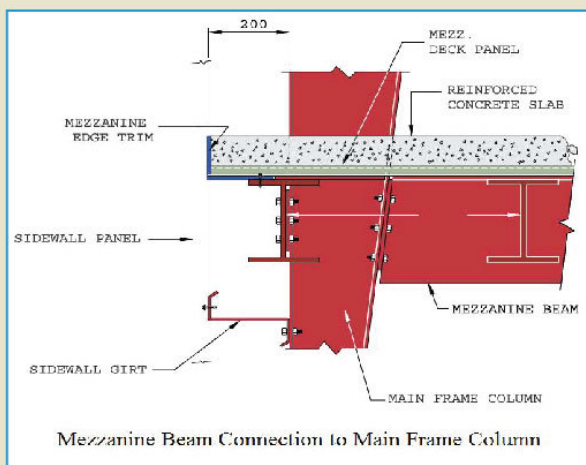
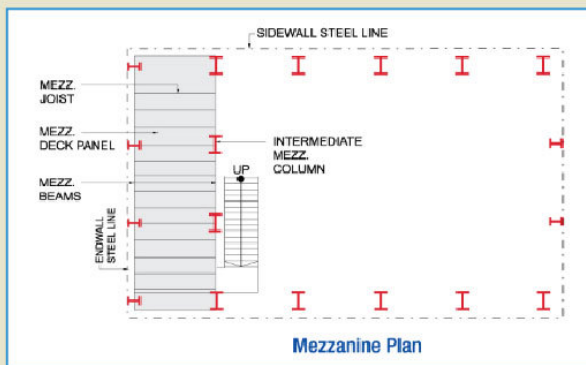
STRUCTURAL SUB-SYSTEMS



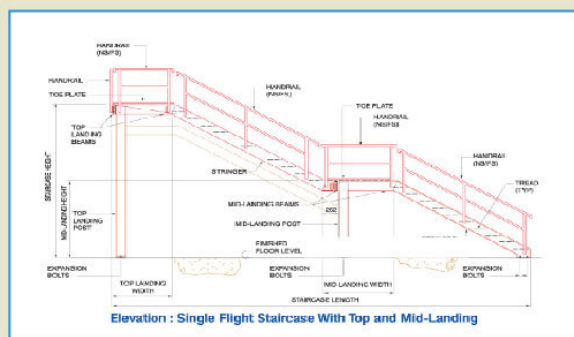
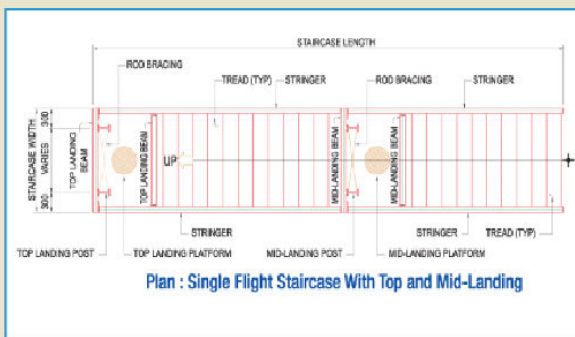
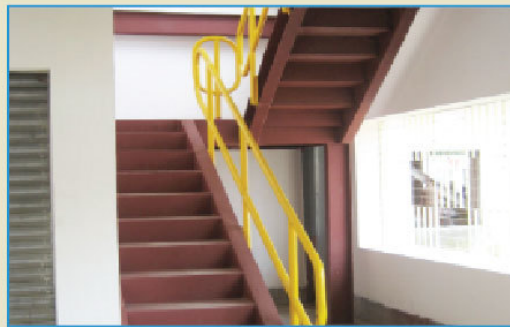
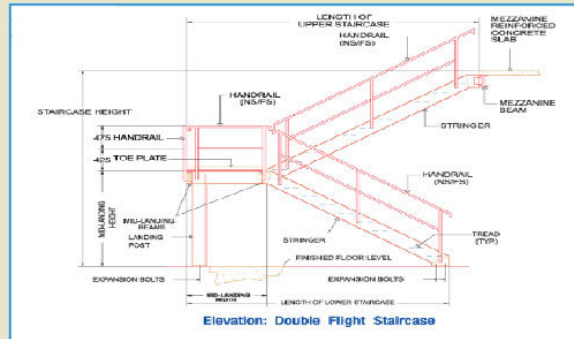
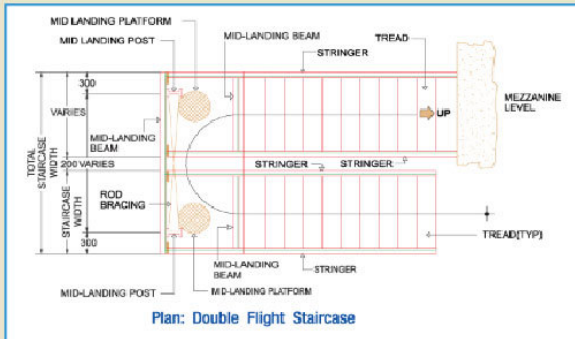
STRUCTURAL SUB-SYSTEMS



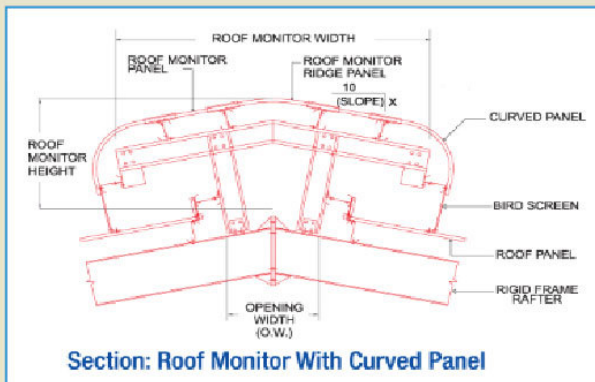
MEZZANINE SYSTEMS



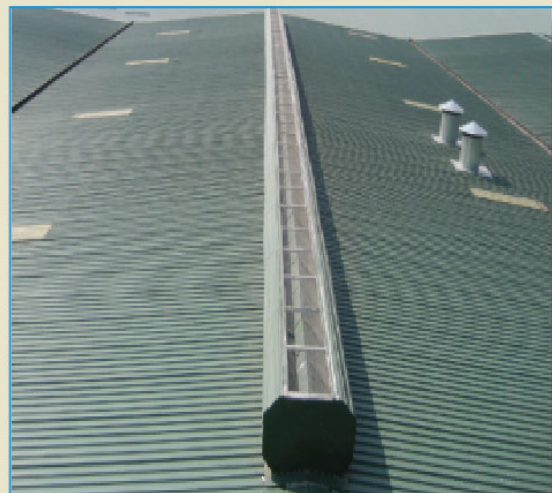
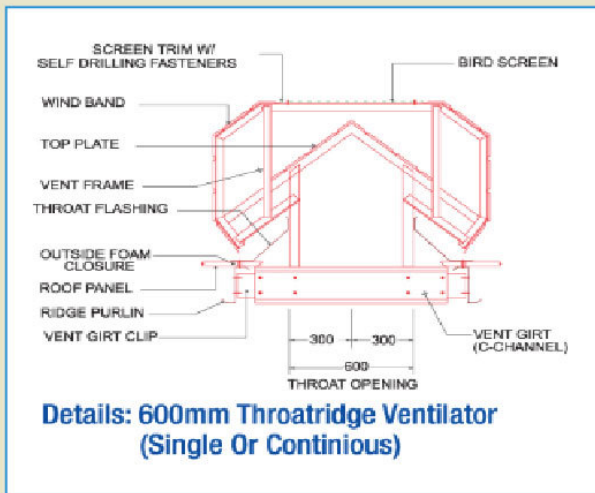
STAIR SYSTEMS



VENTILATION ACCESSORIES



Roof Monitor



Gravity Ridge Ventilator



Louver



Rotary Ventilator



Exhaust Fan

BUILDING ACCESSORIES



Sliding Door



Roll-up Door



Personnel Door



Window



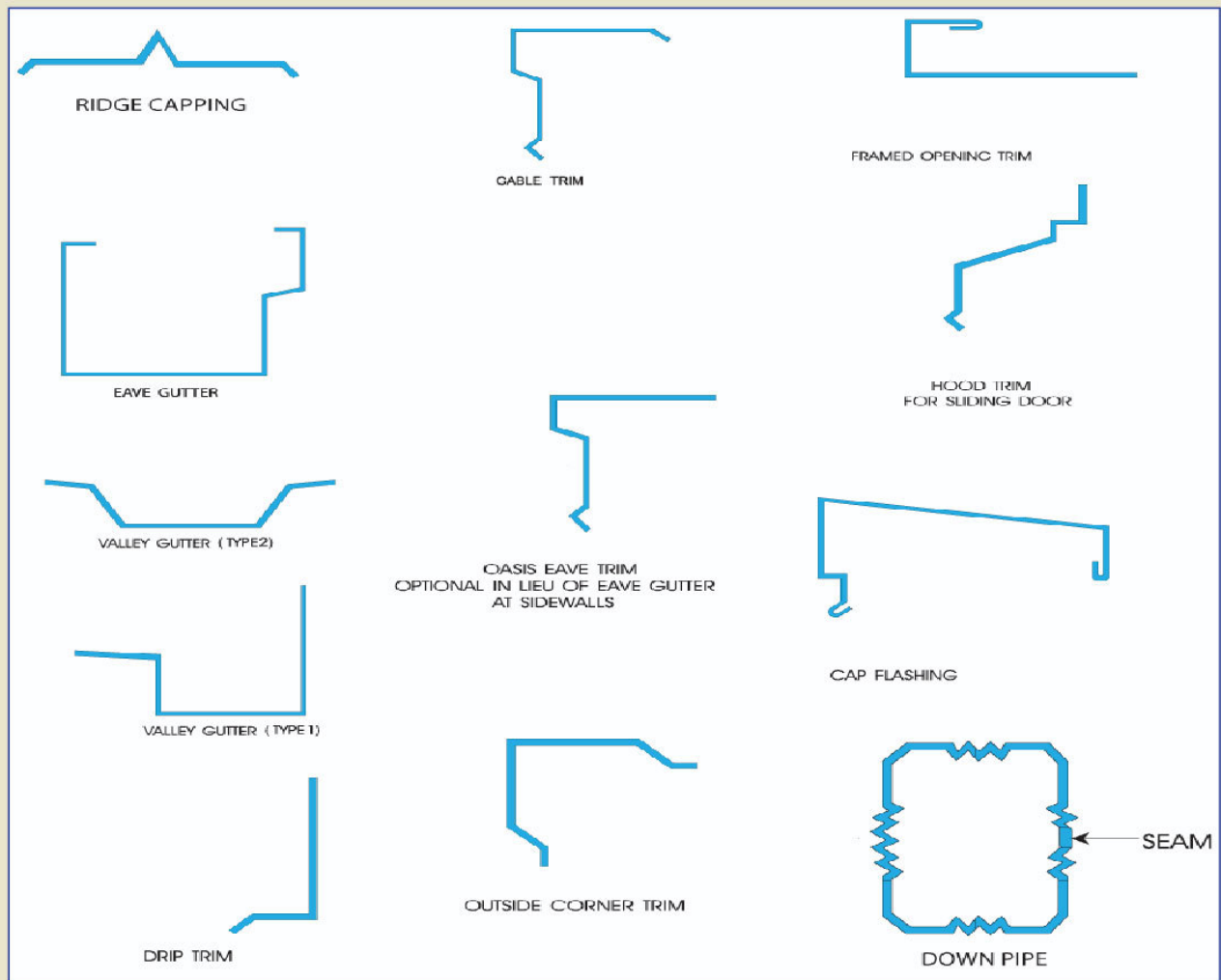
Sky Light



Insulation

TRIMS & GUTTER SYSTEMS

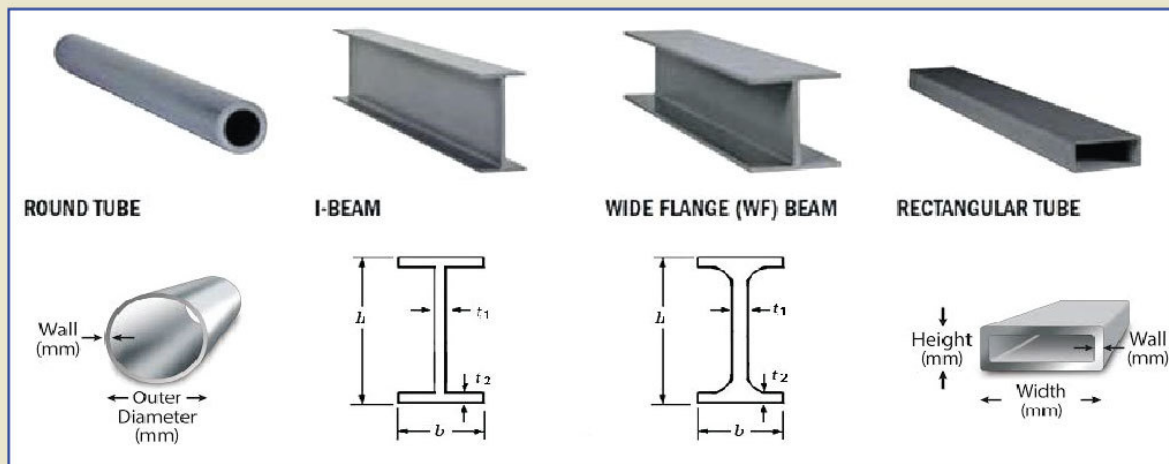
Trims, Flashings, Gutter & Downpipe



MATERIAL SPECIFICATIONS

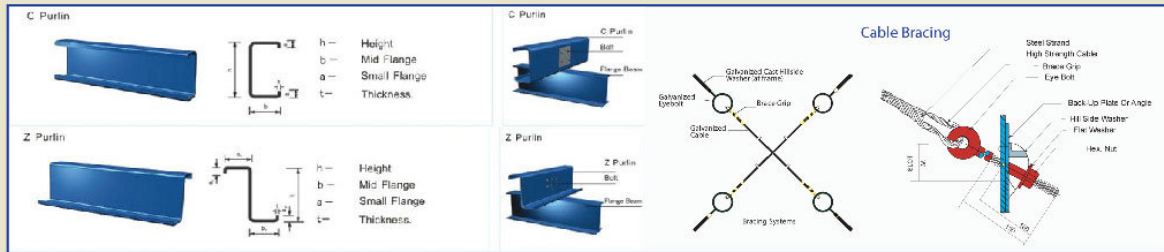
Material Specifications				
No.	Components		Specification	Strength (KN/Cm ²)
1	Built-up Members		ASTM A572M/ ASTM A570M Grade 50 Type 1 or eqv.	F _y = 34.5
2	Hot Rolled Members	Tubes	JIS- G 3466 - STKR 490/ ASTM A500 Grade 50 & 40	F _y = 34.5 F _y = 27.5
		Channels	EN - 10025 S355JR	F _y = 35.5
3	Cold Formed Members		ASTM A607 Grade 50/ ASTM A653M, Z200/ SS Grade 340 Class 1	F _y = 34.5
4	Roof & Wall panel-		ASTM A792M Grade 50 Class 1 Coating AZ150	F _y = 34.5
5	Mezzanine Deck Panel		ASTM A653M SS Grade 345 Class 1: Coating Z275	F _y = 34.5
6	X-Bracing	Cable	ASTM- A475- Extra High Strength Class A	F _y = 119.7
		Angles	JIS- G 3101- SS 400	F _u = 40.0
7	Anchor Bolts		JIS G3101- SS 400	F _y = 23.5
8	High Strength Bolts		A325 M Type 1 Hot Dip Galvanized/ Din 933 HEX Head Bolt Grade 10.9/ 8.8/ 4.6	F _u = 100 F _u = 80.3 F _u = 46

PRIMARY STRUCTURAL MATERIALS

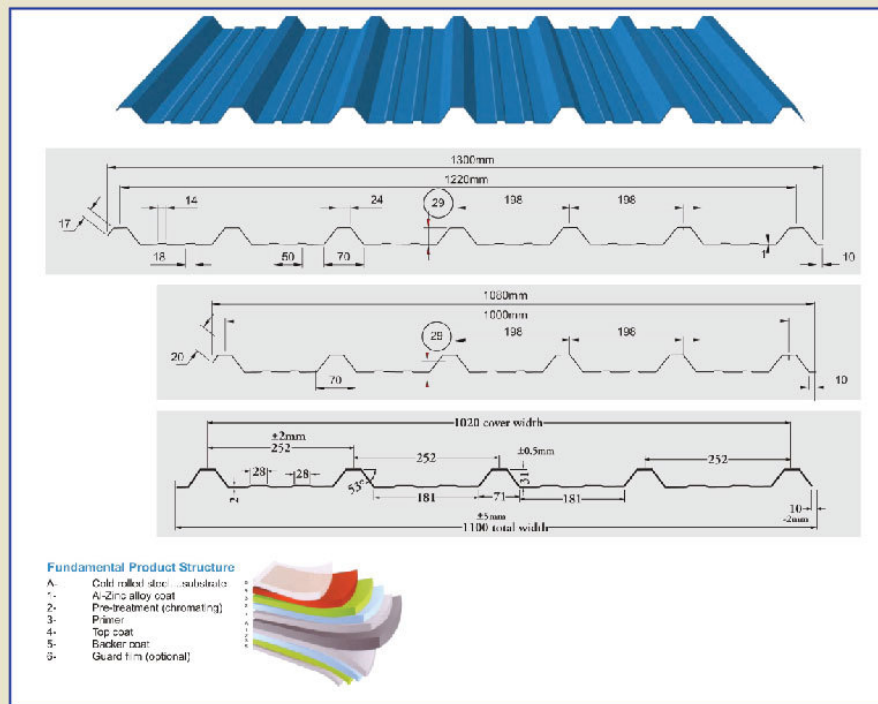


MATERIALS SPECIFICATION

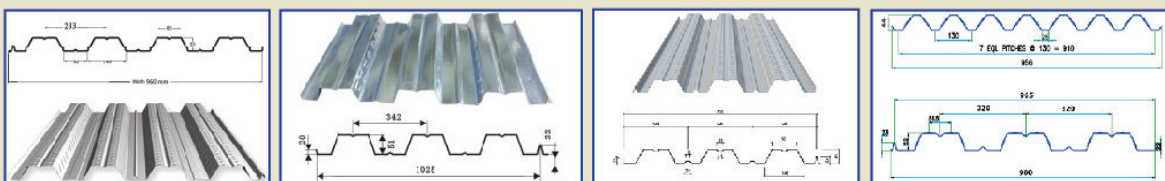
SECONDARY STRUCTURAL MATERIALS



PROFILE SHEET



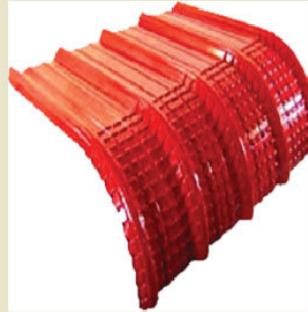
DECKING SHEET



OUR SUPPLY ITEMS



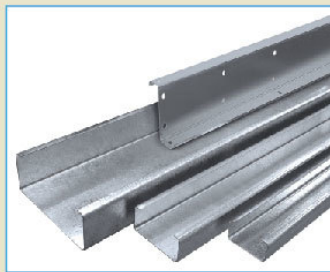
Color Profile sheet



Curve sheet



Sheet Coil












C & Z Purlin



Decking Sheet

OUR AVAILABLE SHEET COLOR CHART

TATA BLUESCOPE

								
Surfmist (SRI-82)	Torres Blue (SRI- 28)	Headland (SRI-41)	Pale Eucalypt (SRI-44)	Cottage Green (SRI-25)	Aquamarine (SRI-42)	Sky Blue (SRI-37)	Toba Blue (SRI-39)	Shadow Grey (Backer Coat)

CHINA (PRIME)

								
RAL 5017 Traffic blue	RAL 5012 Light blue	RAL 1000 Green Beige	RAL 9001 Cream	RAL 6021 Ocean blue	RAL 3018 Strawberry red	RAL 3009 Oxide red	RAL 5015 Sky blue	RAL 6021 Pale green

OUR SUPPLY ITEMS (ACCESSORIES)



Mig Wire



Anchor Bolt



Chemical Bolt



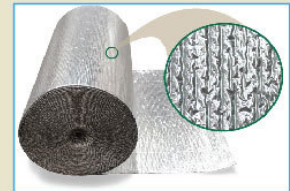
Nuts and Bolts



Self Drilling Screw



Decking Screw



Double Bubble Insulation



PE-Foam



Natural Vent



louver



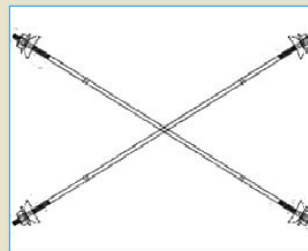
Exhaust Fan



Sealant



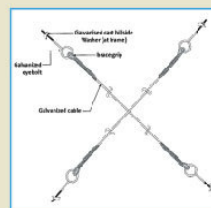
Sandwich Panel



Rod Bracing



Sagrod



Cable Bracing



Turn Bolt

SOME PROJECT VIEW



Union Group, Bangabandhu HI-Tech park,
Gazipur



Apparel Plus Ltd. Mogorkhal, jugitola,
Vogora Bypass, Gazipur



Debonair Group Valuka, Mymensing



SAIF Powertec Ltd. Pubail, Gazipur



Dhamashi jute Ind. Ltd Modhukhali, Faridpur



Stoffatex Fashions Ltd. Salna, Gazipur

SOME PROJECT VIEW



Apparel Plus ECO Ltd. (TNZ Group) 5 Storied Store Building
Jugitola, Vogra Bypass, Gazipur



Apparel Plus ECO Ltd. (TNZ Group) 5 Storied Admin Building
Jugitola, Vogra Bypass, Gazipur



BATA Shoe Company (Bangladesh) Ltd.
Tongi



Sagor Agro Food Industries Ltd.
Bagmara, Surjonogor, Rajbari



Provita Fish Feed Ltd. (Provita Group)
Valuka



Amir Sarker Printing & Packaging
Dosaid, Ashulia, Savar

SOME PROJECT VIEW



MAX Group (Rooppur Nuclear Power Plant)
Rooppur, Pabna



FM Agro Foods Ltd. (KDS Group)
Birampur, Dinajpur



Global Non Oven Ind. Ltd, Sampur, Dhaka



Rupa Fabrics Ltd.(Rupa Group)
Board Bazar, Gazipur



Abloom Design Ltd.
Narayangonj



SMC Enterprise Ltd. (SMC Group)
Valuka

SOME PROJECT VIEW



EON Group, Nijmowna, Gazipur



Pinaki Group, Tongi, Gazipur



Virgo fish feed, Trisal, Mymensing



DBL Ceramics Ltd. (DBL Group), Mymensingh



Future Clothing Ltd. Ashulia, Savar



ZIAN Digital Ltd. Kushura,
Bonbari Dhamrai, Dhaka

SOME PROJECT VIEW



DEKKO Garments Ltd. (DEKKO Group)
Hemayetpur, Savar



DEKKO Garments Ltd. (DEKKO Group)
Ashulia, Savar



Nipa Group, Uttar Khan, Dhaka



Bashundhara Paper Mills Ltd.
Meghnaghat, Narayanganj



IBN Sina Hospital (Connecting Bridge)
Kallanpur, Dhaka



Novera Textile, Sonargaon, Narayanganj

SOME PROJECT VIEW



ACI Salt Ltd. (ACI Group)
Rupgonj, Narayangonj



ACI Foods Ltd. (ACI Group)
Naogaon



ACI Foods Ltd. (ACI Group)
Sirajganj



Fatullah Fabrics Ltd, Fatullah
Narayangonj



Equipment Care, Ashulia, Saver



Safid Tissue Industries Ltd. Pubail, Gazipur

SOME PROJECT VIEW



SMC Enterprise Ltd. (SMC Group)
Sadar, Cumilla



Maliha Poly Tex Fiber Industry Ltd.
Tangail



Hasan Auto Rice Mills Ltd, Gazipur



Ashaloy Housing, Purbachal, Dhaka



Azrun Trading, Gazipura, Gazipur



Premier Cement, Muktarpur, Munshigonj

SOME PROJECT VIEW



Phoenix Ceramics & Auto bricks Ltd,
Fatikchari, Chattogram



Rupa Group, Borobari, Gazipur



S & B Nice Foods Valley Ltd.
Jarkachar, Feni



Sp washing Ltd. Maona, Gazipur



Sign Media Ltd, Uttar Khan, Dhaka



Safe Tech, Ashulia, Saver

SOME PROJECT VIEW



RAK Group (Automatic Bricks & Ceramics
Pvt. Ltd.) Valuka , Mymensing



Entrust Fashion Ltd, Turag, Dhaka



Gazipur City Corporation, Gazipur



Dhaka South City Corporation, Azimpur



Dhaka South City Corporation,
Saydabad Dhaka



Khulna City Corporation, Khulna

SOME PROJECT VIEW



Provita Feed Ltd. (Provita Group)
Chattagram



Kazi Farm Ltd. Gazaria, Munsigonj



AB Power Engineering Ltd.
Sonargaon, Naraynganj



Noman Group (Masud Steel)
Maona, Gazipur



Bikrampur Textile Mills, Madobdi, Norsingdi



AAA Stone Tech Ltd. (Green Granite & Marbles Ltd.)
Saver, Dhaka

SOME PROJECT VIEW



National Auto Rice mills, Jamalpur



Iftekhar Enterprise. Kamarpara,
Turag, Dhaka



BE Electronics Ltd, Bagerhat, Khulna



Iftekhar Enterprise, Purankalia,
Turag, Dhaka



MIAMI Non Woven Fabrics Ltd. Cumilla



Miami Filling station, Cumilla

SOME PROJECT VIEW



Shahriar Steel Mills Ltd.(SSRM)
Konapara, Dhaka



North Bengal Cycle Industries Ltd.
Mirzapur, Tangail



Ananta Sportswear Ltd. (Ananta Group)
Ashulia, Savar



Classic Provita Agro Ltd. (Provita Group)
Gobindagonj, Gaibandha



SAMREE Dyeing(BD) Ltd. (Union Group)
Ghorashal, Norshingdi



Baghatta Nur Aftab Adarsha Biddayapith
Norshingdi

SOME PROJECT VIEW



SUN Pharmaceuticals (BD) Ltd.
Gazipur



Odessa Fashions Ltd., Gazipur



Epyllion Ltd. (Epyllion Group)
Kutubpur, Narayanganj



Rupayan Housing Estate Ltd.
Shiddeshwari, Dhaka



Global Television, Tejgaon, Dhaka



Hard Group, Borongail, Shibaloy
Manikganj

OUR VALUABLE CLIENT

Company Name	Location	Utility of Building	Building Area(sft)
 <ul style="list-style-type: none"> Vibrant Smart Technologies Ltd. (Union Group) 	Bangabandhu HI-Tech park, Gazipur	Five Storied Mobile & laptop Assembly Factory	276320
 <ul style="list-style-type: none"> Automatic Bricks & Ceramics Pvt. Ltd. (RAK Group) 	Valuka, Mymensing	Auto Bricks Shed Building	16000
 <ul style="list-style-type: none"> ACI foods Ltd. ACI foods Ltd. ACI Salt Ltd. ACI Detergent Ltd. ACI Foods. Ltd. (Rice Unit) ACI Pure Flour Ltd. 	Sirajgonj Nowgaon Rupganj, Narayanganj Rupganj, Narayanganj Naogaon Narayanganj	Single Storey Food factory Single Storey Food factory Five Storey Building Single Storey Food factory Shed Building Mezzanine & Shed building	25000 20500 15000 20000 15000 50000
 <ul style="list-style-type: none"> Debonair Group 	Valuka, Mymensingh	Two Storied & One Storey Garments Factory	95000
 <ul style="list-style-type: none"> Bashundhara Group 	MeghnaGhat, Narayanganj. International Convention City Bashundhara	Multi-Paper Industries Shed Building Single Storey Security House	7810 2000
 <ul style="list-style-type: none"> Stoffatex Fashions Ltd. 	Salna, Gazipur	Four Storied Garments Factory	56000
 <ul style="list-style-type: none"> Apparel Plus Limited (TNZ Group) Apparel Plus Eco Limited TNZ Apparel Limited 	Mogorkhal, Jugitola, Vogra Bypass, Gazipur Mogorkhal, Jugitola, Vogra Bypass, Gazipur Gazipur	Two Storied Garments Factory Five Storied Two Building Pump House	150000 76645 308
 <ul style="list-style-type: none"> Miami Non Woven fabrics Ltd. Miami Parking Shed Miami Plastic Miami Printing & Packaging Ltd. Miami Leisure spot Miami Royel Coach 	Cumilla	Three Storied Non Woven Factory Single Storey parking Shed Single Storey Plastic Factory Single Storey Printing Factory Single Storey Convention Hall Two Storied Bus counter & Office	35000 15000 5000 40000 5000 2000
 <ul style="list-style-type: none"> Eon foods Ltd. (Eon Group) 	Nijmowna, Gazipur	Single Storey with Mezzanine Floor (Food Factory)	20000

OUR VALUABLE CLIENT

Company Name	Location	Utility of Building	Building Area(sft)
 <ul style="list-style-type: none"> Dekko Design Ltd. Dekko Garments Ltd. Dekko Garments Ltd. Dekko Garments Ltd. (DGL Admin Building) Agami washing Ltd 	Ashulia, Savar	Single Storey (Roof Top) Garments Factory	33098
	Gazipur	Connecting Bridge	1000
	Hemayetpur, Savar	Porch	2000
	Maona, Gazipur	Office Building Mezz. Floor	5000
	Chandra, kaliakoir, Gazipur	Single Storey Factory work	30000
 <ul style="list-style-type: none"> IBN Sina Hospital 	Kallaynpur, Dhaka	Connecting Bridge	1400
 <ul style="list-style-type: none"> Gazipur City Corporation 	Gazipur	RCC Drain & Road work	2km
 <ul style="list-style-type: none"> Dhaka South City Corporation (SM Construction) 	Sayedabad, Dhaka	Two Storied Emergency Warehouse Building	10000
	Ajimpur Dhaka	Two Storied Emergency Warehouse Building	10000
	Khilgaon, Dhaka	Two Storied Emergency Warehouse Building	10000
 <ul style="list-style-type: none"> Dhaka North City Corporation (SM Construction) 	Gulshan-2	Two Storied Emergency Warehouse Building	10000
		Two Storied Emergency Warehouse Building	10000
 <ul style="list-style-type: none"> Khulna City Corporation 	Khulna	Service Building	15000
 <ul style="list-style-type: none"> Provita Fish Feed Ltd. (Provita Group) Provita Feed Ltd. Provita Feed Ltd. (Provita Group) Classic Provita Agro Ltd. 	Valuka, Mymensingh	Single Storey Feed Mills	7688
	Chattogram	Shed Building (Multi Gable) Raw Materials Godown	43271
	Chattogram	Dumping Shed Building	6235
	Gobindagonj, Gaibandha	Shed Building	15469
 <ul style="list-style-type: none"> Square textile Ltd 	Square master bari, Gazipur	Machine Platform	5000
 <ul style="list-style-type: none"> Kazi Farm Ltd. 	Gazaria, Munsigonj	Single Storey Feed Mill	15000

OUR VALUABLE CLIENT

Company Name	Location	Utility of Building	Building Area(sft)
	• SMC Enterprise Ltd.	Cumilla	Mezzanine Floor at warehouse
	• SMC Enterprise Ltd.	Valuka	Single Shed
	• Rupa Group	Borobari, Boardbazar, Gazipur	Four Storied Stair
	• Rupa Fabrics Ltd.	Boardbazar, Gazipur	Shed Building
	• Future clothing Ltd.	Ashulia, Savar	One Storey Garment Factory
	• Premier Cement Mills Ltd.	Munshigonj	Single Storey Cement Factory
			Conveyer Belt
	• Dahmashi Jute Ind. Ltd.	Faridpur	Single Storey Jute Factory
	• Dahmashi Trading Ltd.	Shatarkul, Dhaka	Single Storey Warehouse
	• Dahmashi Trading Ltd.	Shatarkul, Dhaka	Single Storey Warehouse
	• Green Smart Shirts Ltd.	Mawna, Gazipur	Guard House Shed Building
	• Fatullah Fabrics Ltd.	Fatullah, Narayanganj	Three Storied Fabrics Factory
	• SAIF Powertec Ltd.	Pubail, Gazipur	Single storey Battery Factory
			Mezzanine Floor
			Overhead Crane
	• Novera Textile	Sonargaon, Narayanganj	Factory Buliding
	• Karotua Currier Service.	Gabtolli, Dhaka	Single Storey Warehouse
	• Virgo Fish & Agro Ltd.	Trisal, Mymansing	Fish Processing Factory

OUR VALUABLE CLIENT

Company Name	Location	Utility of Building	Building Area(sft)
 <ul style="list-style-type: none"> Bata Shoe Company (BD) Ltd. Dhanmondi Bata Shoe Company (BD) Ltd. Tongi 		Shed Building New CDC Building Roof sheet changing work, loading unloading area slope increase, old CDC	27915
 <ul style="list-style-type: none"> Dragon Sweater Bangladesh Ltd. 	Mia Bazar, Cumilla	Spinning Factory	150000
 <ul style="list-style-type: none"> Abloom Design Ltd. 	Narayanganj	Dyeing Factory	50937
 <ul style="list-style-type: none"> Shahriar Steel Mills Ltd. (SSRM) 	Konapara, Dhaka	Generator Building	3588
 <ul style="list-style-type: none"> Rupayan Housing Estate Ltd. (B-5) 	Dhaka	Steel Stair	24000 KG
 <ul style="list-style-type: none"> Noman Group (Masud Steel) 	Mawna, Gazipur	Single storey Denim Factory with Mezzanine Floor	185000
 <ul style="list-style-type: none"> Sign media Ltd. 	Uttar khan	Single Storey Printing Factory	10000
 <ul style="list-style-type: none"> AAA Stone Tech Ltd. 	Savar, Dhaka	Single Storey Stone Factory with Mezzanine Floor	30000
 <ul style="list-style-type: none"> AB Power Engineering Ltd. 	Sonargaon, Narayanganj	Single storey Electronics Factory with Double Mezzanine Floor	16000
 <ul style="list-style-type: none"> Alamin Academy 	Norsingdi	School Building Shed	5380
 <ul style="list-style-type: none"> Azrun Trading 	Gazipur	Single Storey Car Showroom with Mezzanine Floor	7500

OUR VALUABLE CLIENT

Company Name	Location	Utility of Building	Building Area(sft)
 <ul style="list-style-type: none"> FM Agro Foods Ltd. (KDS Group) FM Agro Foods Ltd. (KDS Group) 	Birampur, Dinajpur Birampur, Dinajpur	Milling Hall Paddy Godown	58591 58591
 <ul style="list-style-type: none"> Hard Group 	Borongail, Shibaloy, Manikgonj	Four Storied Building	20150
 <ul style="list-style-type: none"> Ananta Sportswear Ltd. 	Nishchintapur, Ashulia, Savar	Single Storey Tissue Factory	18500
 <ul style="list-style-type: none"> A.G. Dresses Ltd (Pinaki Group) 	Tongi, Gazipur	Single Storey Warehouse	11900
 <ul style="list-style-type: none"> Phoenix Ceramics & Auto Bricks Ltd. 	Fatikchari, Chattogram	Auto Bricks Factory Building	106000
 <ul style="list-style-type: none"> Diya Packaging Ind. 	Board Bazar, Gazipur	Single storey with Mezzanine Floor Printing Factory	6000
 <ul style="list-style-type: none"> Green Granite & Marbles Ltd. 	Narayangonj	Single Storey Marbles Factory	5000
 <ul style="list-style-type: none"> SP Washing Ltd. 	Maona, Gazipur	Single storey washing factory	3000
 <ul style="list-style-type: none"> Neckless Steel & Re-Rolling mills Ltd 	Narayangonj	Single Storey Re-Rolling mills	28000
 <ul style="list-style-type: none"> A.k. Sobhan Trading 	Pubail, Gazipur	Single Storey Warehouse	5500
 <ul style="list-style-type: none"> Entrust Fashions Ltd. Entrust Fashions Ltd. 	Turag, Dhaka Turag, Dhaka	Single Storey Garments Factory with Mezzanine Floor Warehouse/Factory Building	35000 10928

OUR VALUABLE CLIENT

Company Name	Location	Utility of Building	Building Area(sft)
 <ul style="list-style-type: none"> BSRM Steels Ltd. 	Nasirabad, Chittagong	Shed Building	31000
 <ul style="list-style-type: none"> DBL Cermics Ltd. (DBL Group) 	Mymensing	Factory building	15000
 <ul style="list-style-type: none"> SAM REE Dyeing (BD) Ltd. (Union Group) 	Ghorashal, Narsingdhi	Single Storey Washing Plant Seven Storied lift Core	27000 2000
 <ul style="list-style-type: none"> Nipa Group 	Uttar khan, Dhaka	Two Storied washing Factory	45000
 <ul style="list-style-type: none"> BE Electronics Ind. Ltd. (BE Group) 	Battery Factory Bagerhat	Single Storey Electronics Factory	42000
 <ul style="list-style-type: none"> ZIAN digital Ltd. 	Kalampur, Dhamrai	Single Storey Non Woven Factory	30000
 <ul style="list-style-type: none"> Sangram Auto Rice Mills Ltd. 	Satkhira	Single Storey Auto Rice Mill	83000
 <ul style="list-style-type: none"> Bikrompur Textile Mills 	Madobdi, Narsingdi	Single Storey textile mill	20000
<ul style="list-style-type: none"> Amir Sarker Printing & Packaging 	Dosaid, Ashulia, Savar	Shed Building	15750
 <ul style="list-style-type: none"> Shohag Poultry Firm 	Chandina, Cumilla	Single Storey Poultry Farm	5000
 <ul style="list-style-type: none"> Madob Textile Mills 	Madobdi, Narsingdi	Single Storey Textile Mill	25000
 <ul style="list-style-type: none"> Iftexhar Enterprise 	Kamarpara, Turag, Dhaka Purankalia, Turag, Dhaka	Three Storied Garments Factory Single Storey Warehouse	42000 10500
 <ul style="list-style-type: none"> Safid Tissue Industries Ltd. 	Pubail, Gazipur	Single Storey Tissue Factory	20000

OUR VALUABLE CLIENT

Company Name	Location	Utility of Building	Building Area(sft)
 <ul style="list-style-type: none"> • Maliha Poly Tex Fiber Industry Ltd. 	Tangail	Warehouse cum office building	32000
 <ul style="list-style-type: none"> • Epyllion Ltd. • Epyllion Knitwears Ltd. • Epyllion Ltd. 	Kutubpur, Narayanganj Mirpur Kutubpur, Narayanganj	Canopy Construction Canopy Construction Modification & Retrofitting works	45000 42000 25000
 <ul style="list-style-type: none"> • Italian-Thai Development Public Com. Ltd. • ITD-SINOHYDRO JV • ITD-SINOHYDRO JV 	Agargoan, Dhaka Diabari, Uttara Diabari, Uttara	Bridge 	20000
 <ul style="list-style-type: none"> • Ashaloy Housing 	Purbachal, Dhaka	Residential Duplex House	5000
 <ul style="list-style-type: none"> • Asia Composite mills Ltd. 	Mawna, Gazipur	Single Storey Spinning Mill	60000
 <ul style="list-style-type: none"> • Global Non Woven Ind. Ltd. 	Sampur, Dhaka	Two Storied Non Woven Fabrics Factory	20000
 <ul style="list-style-type: none"> • Hasan Auto Rice mills Ltd. 	Gazipur	Single Storey Auto Rice Mill	17000
 <ul style="list-style-type: none"> • Equipment Care Ltd. 	Tongabari, Ashulia, Dhaka	Two Storied Equipment Factory	2848
 <ul style="list-style-type: none"> • National Auto Rice Mills Ltd. 	Jamalpur	Single Storey Auto Rice Mill	10000
 <ul style="list-style-type: none"> • Advance Flexopack Ltd. 	Fatulla, Narayanganj	Single Storey Hanger Factory	10000
 <ul style="list-style-type: none"> • Dhaka Village 	Purbachal, Dhaka	Residential Cottage	2000

OUR VALUABLE CLIENT

Company Name	Location	Utility of Building	Building Area(sft)
 <ul style="list-style-type: none"> MAX Group (Rooppur Nuclear Power Plant) MAX Group (Rooppur Nuclear Power Plant) 	Pabna Paharpur	Multi Storied Building (Lot 600) Multi Storied Building (Lot 2900)	
 <ul style="list-style-type: none"> SUN Pharmaceuticals (BD) Ltd. 	Gazipur	Three Storied Building	20000
 <ul style="list-style-type: none"> Odessa Fashions Ltd. 	Gazipur	Warehouse Building	22120
 <ul style="list-style-type: none"> Education Engineering Dpt.(EED) (Baghatta Nur Aftab Adarsha Biddyapith) 	Baghatta, Norshingdi	Four Storied School Building	2000
 <ul style="list-style-type: none"> Bangladesh Agricultural University 	Mymensingh	University Main Gate	5000
<ul style="list-style-type: none"> Genuine Auto Bricks Ltd. 	Badurpur, Beltoli Bazar, Matlab Uttar, Chandpur.	Factory Building	91032
<ul style="list-style-type: none"> ORCHID (HK) International 	Ashulia, Savar	Warehouse/Factory	27207
<ul style="list-style-type: none"> Sagor Agro Foods Industries Ltd. 	Bagmara, Surjonagar, Rajbari	Factory Building	15462
 <ul style="list-style-type: none"> Global Television 	Tejgaon, Dhaka	Shed Building	6367
 <ul style="list-style-type: none"> S & B Nice Foods Valley Ltd. 	Jarkachar, Feni	Factory Building	9040
<ul style="list-style-type: none"> S & B Nice Foods Valley Ltd. 	Jarkachar, Feni	Factory Building	9040
<ul style="list-style-type: none"> S & B Nice Foods Valley Ltd. 	Jarkachar, Feni	Warehouse	11340
 <ul style="list-style-type: none"> North Bengal Cycle Industries Ltd. 	Mirzapur, Tangail	Commercial Building (Multistoried)	8400
 <ul style="list-style-type: none"> Lantabur Group 	Kewa, Sreepur, Gazipur	Warehouse	26427
<ul style="list-style-type: none"> Lantabur Group 	Kewa, Sreepur, Gazipur	Knitting Shed	18878



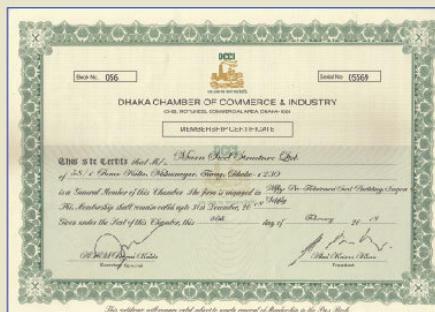
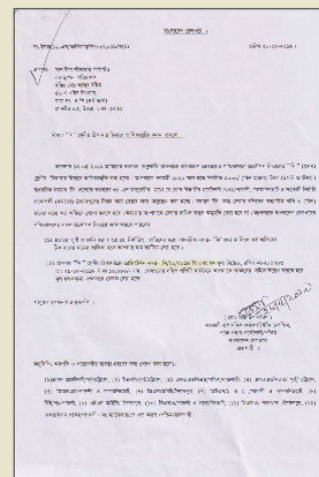
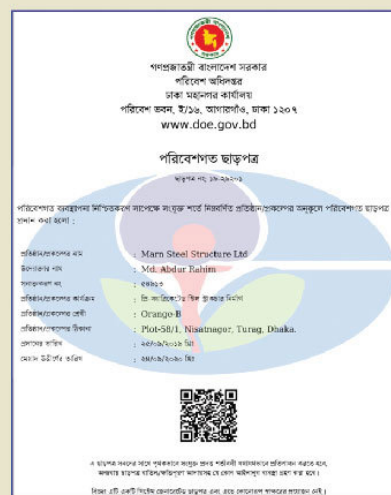
MARN STEEL STRUCTURE LIMITED

World class steel structure solution

This brochure has been compiled by MSSSL to support engineers with the most common data on Pre-Engineered steel building accordance with national and international. For further query related to pre-engineered steel building, please feel free to contact Our Sales department.

This brochure may contain some typing or printing errors. Readers are requested to consider these errors (if any cordially and suggest us to improve the quality. Your valuable suggestions will be accepted affectionately.

Our Certifications





SISTER CONCERN OF MARN GROUP

MARN Steel Structure Ltd.
MARN Trade International.
MARN Engineers & Architects.
MARN AGRO
A. R. Engineering & Technology.

www.marnsteel.com

Factory:

Puran Kalia, Turag, Dhaka,
Call: +88-01914242402, 04, 16
E-mail: factory@marnsteel.com
factory.marnsteel@gmail.com

Corporate Office:

House # 09 (2nd Floor), Garib-E-Newaz Avenue
Sector # 11, Uttara , Dhaka-1230, Bangladesh.

Phone: +88-02-48958774
+88-019 14 24 24 00 ~ 42
+88-01713 22 96 94

E-mail: info@marnsteel.com
md@marnsteel.com
marnsteel@gmail.com



MARN STEEL STRUCTURE LIMITED

World class steel structure solution

Pre-Engineered Steel Building Manufacturer